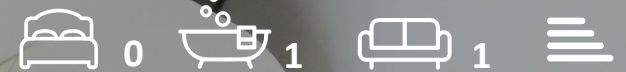


Flat 6 189 Old Christchurch Road  
, Bournemouth, BH1 1JU

**£875 Per month**





## Flat 6 189 Old Christchurch

, Bournemouth, BH1 1JU

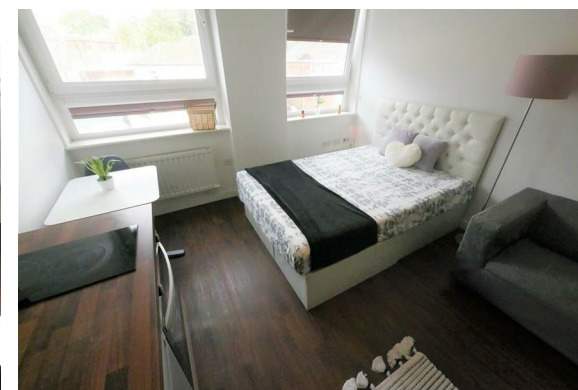
Studio flat to let in Bournemouth Town Centre - Student Let mainly but Professionals considered.

### Key Features:

Fully furnished  
Fully Fitted kitchenette  
Modern furnishings, fittings, and furniture  
Complimentary Wifi Access  
Car Park off-road (Subject to availability and payable permit)

Council Tax band - A

EPC rate: D







Floor Plan



Viewing

Please contact our Fully Managed Properties Office on  
if you wish to arrange a viewing appointment for this property or require further information.

Area Map



Energy Efficiency Graph



These particulars, whilst believed to be accurate are set out as a general outline only for guidance and do not constitute any part of an offer or contract. Intending purchasers should not rely on them as statements of representation of fact, but must satisfy themselves by inspection or otherwise as to their accuracy. No person in this firms employment has the authority to make or give any representation or warranty in respect of the property.